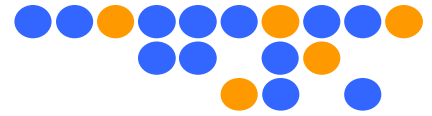


TDR Probe



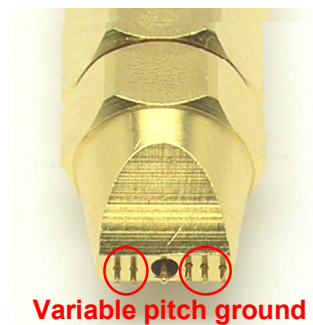
GigaLane's **TDR Probe** is a useful accessory when making time domain reflectometry measurements on printed circuit boards. If no convenient method of connection is available, such as an SMA launch, then probing is the only viable solution. It incorporates a novel variable pitch, spring-loaded ground pin. The spring-loaded feature enables compensation of different height ground and signal contacts. The variable pitch can be 1.0, 1.27, 1.65, 2.0 and 2.5mm.

Specification

Part Number	GLT-TDRP-K-01
Frequency range	DC ~ 10 GHz
Insertion loss	< 0.5 dB
Return loss	> 10 dB
Connector	2.92 mm K-type
Probe pitch	1.0 ~ 2.5 mm



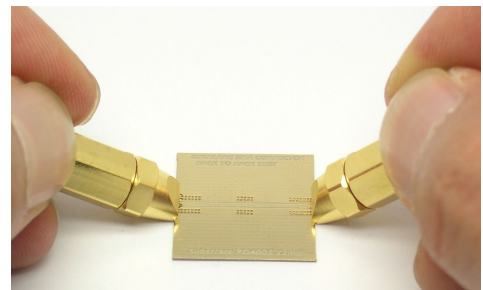
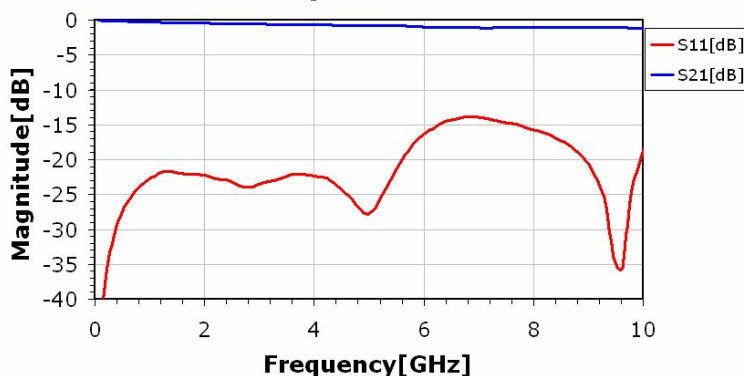
After separating the cap of the **TDR probe**, the pin can be inserted or not.



The pitch of signal and ground can be varied by 5 steps.

Performance

S-parameter



* S-parameter includes two **TDR probes** and a Rogers Substrate(RO40030 12mil) 20mm long. (Right side picture.)