

# GigaLane Adapter Data Sheet



## ■ SMP (F) to SMP (F) Bullet

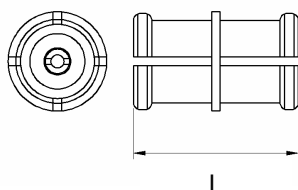
### Technical Data



Electrical Data	Impedance	50 Ohm	
	Frequency range	DC to 40 GHz	
	Dielectric withstanding voltage	500 Vrms at sea level 125 Vrms at 70,000 ft	
	Insulation resistance (min)	5,000 megaohms	
	Contact resistance (max)	Center conductor 6.0 milliohms Outer conductor 2.0 milliohms	
	RF leakage	-80 dB at 3 GHz -65 dB at 3 to 26.5 GHz	
	VSWR (DC to 23 GHz)	1.10 :1 typical	(* Performance listed is typical for the GigaLan <sup>®</sup> SMP socket-to-socket bullet part number PFS-ADP-PFS-01. Performance on other configurations may vary.)
	VSWR (23 to 26.5 GHz)	1.15 :1 typical	
	VSWR (26.5 to 40 GHz)	1.25 :1 typical	
Mechanical Data	Radial misalignment	+/- 0.25 mm	
	Axial misalignment	0 ~ 0.25 mm	
	Center to center spacing (min)	4.32 mm	
Material Data	Center contact & socket	Beryllium copper (with Au plating under Ni plating)	
	Insulator	PTFE	
	Shroud & body	Stainless Steel	
Environmental Testing	Temperature range	-65 ~ +125 °C	
	Vibration	MIL-STD-202 method 204, test condition D	
	Shock	MIL-STD-202 method 223, test condition I	
	Thermal shock	MIL-STD-202 method 107, test condition B	

Mechanical Force for Shrouds		Full Detent	Limited Detent	Smooth Bore
	Force to engage (max)	6.8 kg	4.5 kg	0.9 kg
	Force to disengage (min)	2.3 kg	0.9 kg	0.2 kg
	Durability cycle (min)	100	500	1,000

### Outline Drawing



### Part Number

Part No.	Length
PFS-ADP-PFS-01	L = 6.5
PFS-ADP-PFS-02	L = 10.0