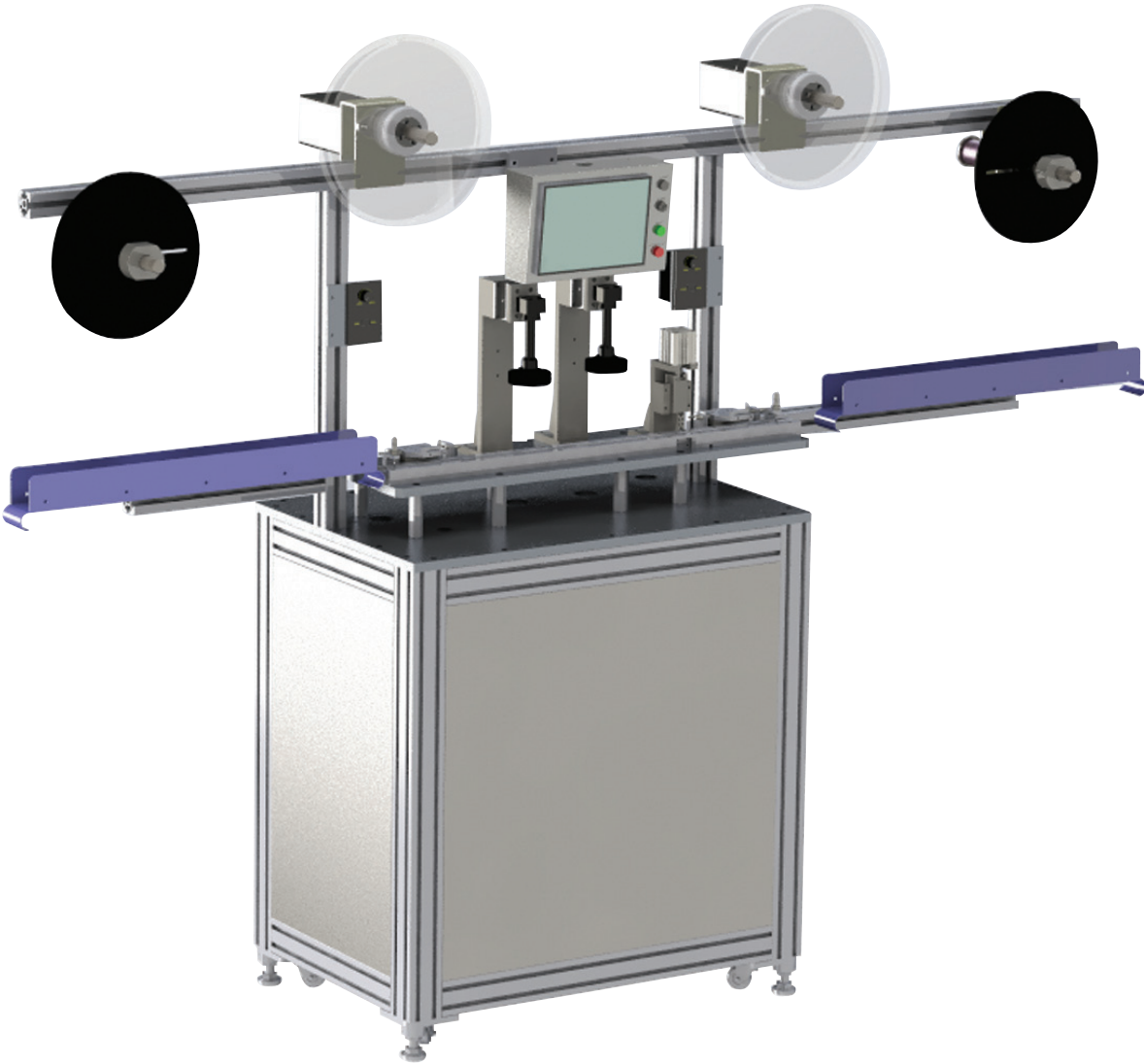


Insert Mold Vision Inspection Machine

GMC-2000



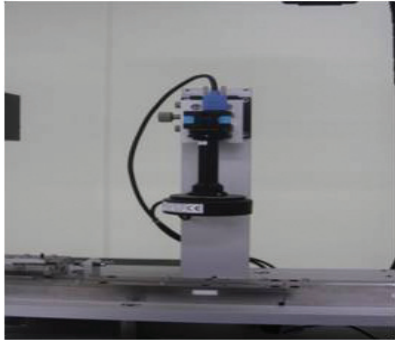
Product Overview

- Automatic inspection machine for insert molding type product
 - Inspection item: Short shot, scratch, crack, plating defects, etc.
- Automatic defect sorting & removing
- Customized vision inspection software

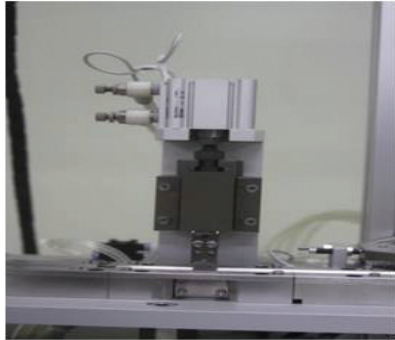
Configuration



Feeding Unit



Vision Unit



Defect Sorting Unit

Application

- Connector for smart phone, tablet PC, laptop, wireless LAN device

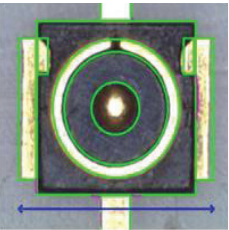
Features

- Reel to reel type
- Inspection number counting
- Customized vision inspection S/W
- Tack time: 0.6 sec
- 2,000 mm(w) x 500 mm(l) x 1,700 mm(h)

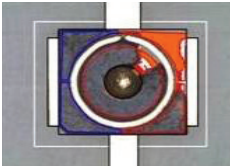


Vision Inspection Monitor

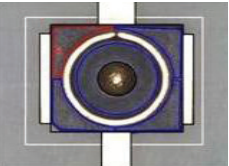
Output



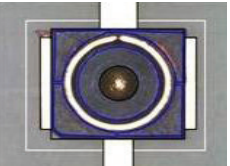
Pass



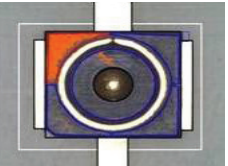
NG
(Short shot)



NG
(Foreign matter)



NG
(Burr)



NG
(Thermal strain)